

BROUGHT SARA COMMERCIAL AND RESIDENTIAL COMPLEX A SAFER AND MORE MANAGEABLE ENVIRONMENT

Milesight Network Cameras with Multiple Features Satisfy Diversified Needs in the Complex

Organization:
Sara commercial and residential complex

Location:
Mashhad, Iran

Industry Segment:
Commercial Building

Milesight Partner:
Kankash

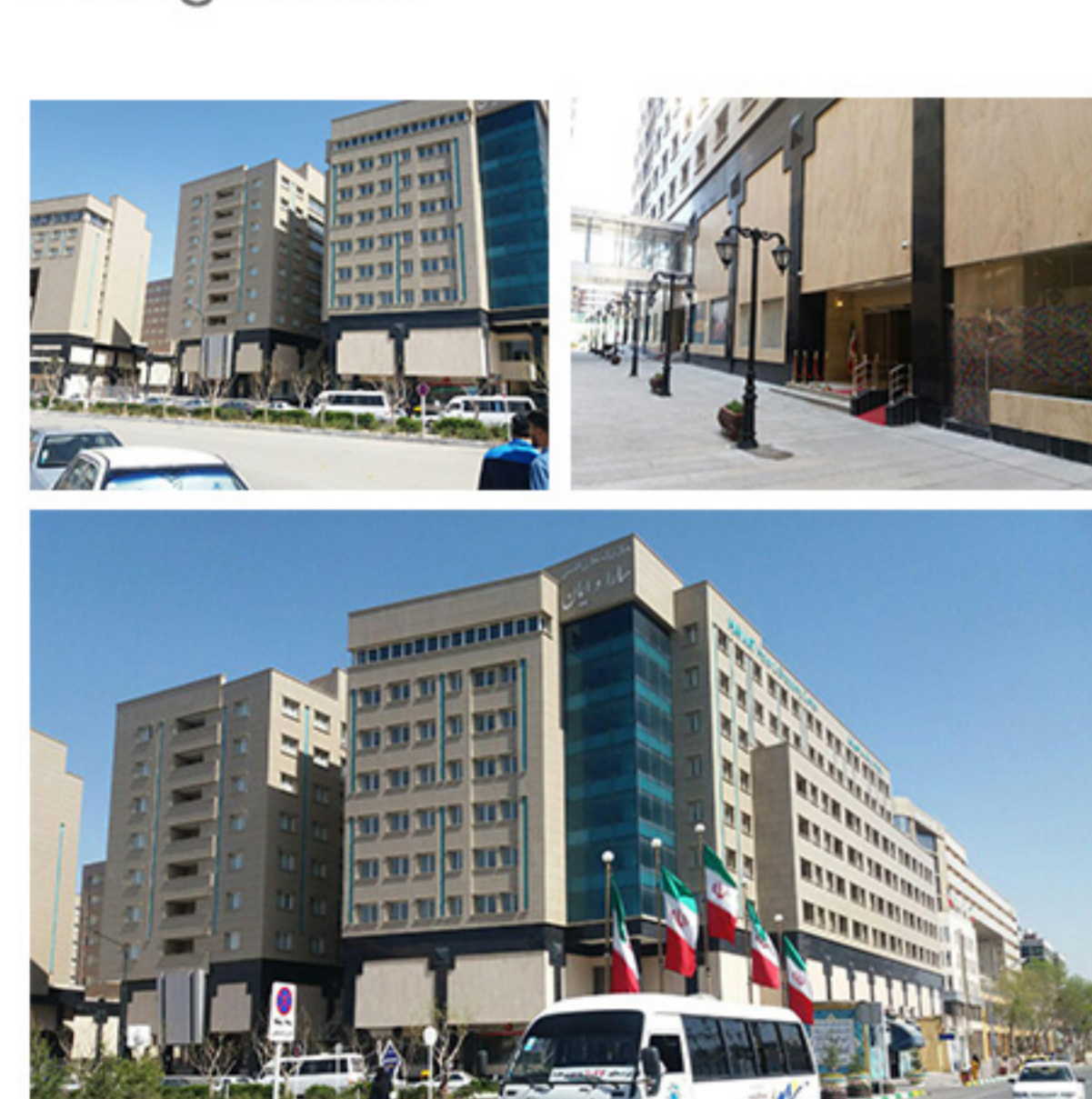
Quantity and Model:
192 pcs Mini Bullet Network Cameras (MS-C3263-PNA)
28 pcs Pro Dome Network Cameras (MS-C2972-FPB)
275 pcs Vandal-proof Mini Dome Network Cameras (MS-C2973-PB)

Overview

Sara Commercial and Residential Complex, one of the famous shopping center with an area of 84 thousand square meters, was equipped with 475 pcs Milesight network cameras including 275 pcs Vandal-proof Mini Dome Network Cameras (MS-C2973-PB), 192 pcs Mini Bullet Network Cameras (MS-C3263-PNA) and 28 pcs Pro Dome Cameras (MS-C2972-FPB). Cooperating with management and recording software of Digifort, Milesight's network cameras efficiently improve the management and security.



Background



The 12-storey complex consists of 580 commercial units on 3 floors, residential units on 7 floors and a 2-storey parking lot. With multiple functions, the building demanded to install a trustworthy IP surveillance system which would satisfy different requirements of specific areas. Since it was an important project, several corporations competed to get the opportunity. Finally, the experienced Kankash with Professional Milesight products won the project.

Challenge

The project has three main parts that emphasizes in different function requirements. For the commercial and residential area where most people gathered, it is necessary to get broader visual field through cameras. In the parking lot where the camera would be in a low light situation. Night visibility took an important role in catching distinct images even in low light environment. The entrance and outside of the building were much more demanding in light condition, the only problem may not just lay in the lack of the light at night but has strong light contrast in daytime which would influence the quality of the images.



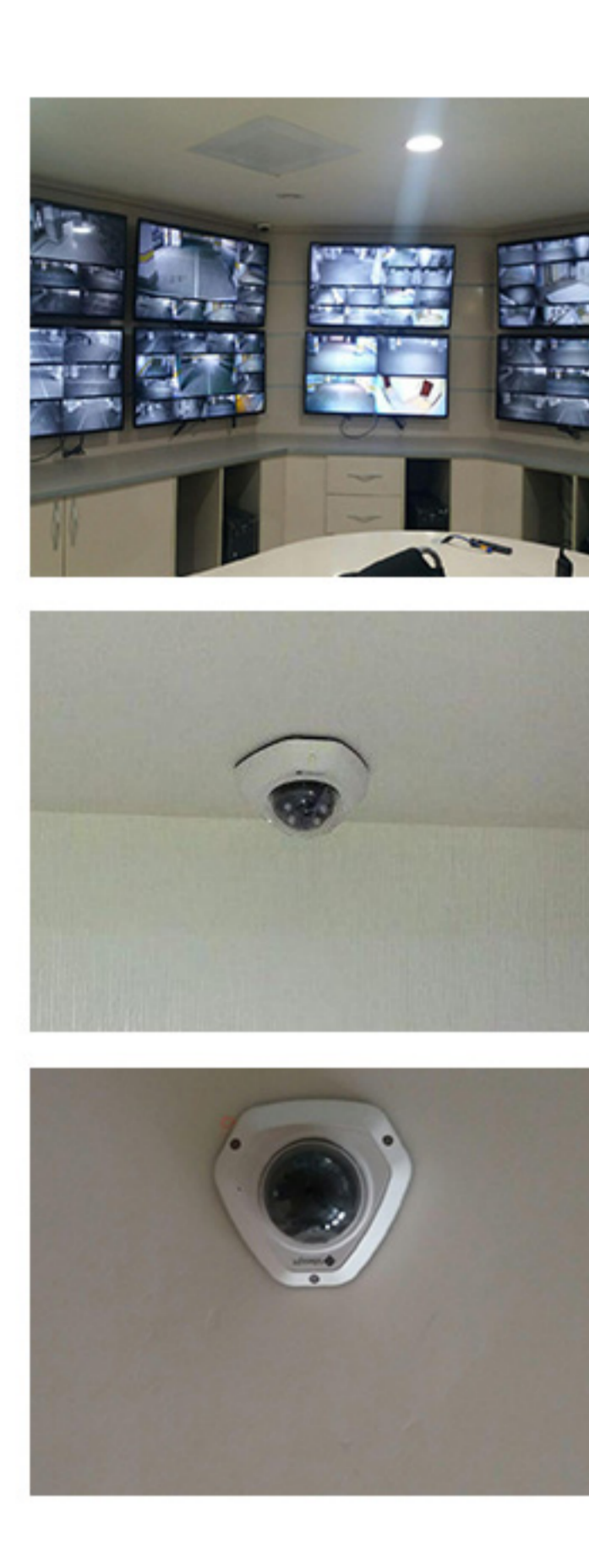
Solution

After exploring the demands and actual situation of the complex. 475 Milesight network cameras of three models were chosen to be installed. The three models cooperated with back-end management and recording software constituting a complete surveillance system. All the places under the cameras can be well monitored and controlled via internet network and also the digifort software, which greatly enhance the management level and efficiency.



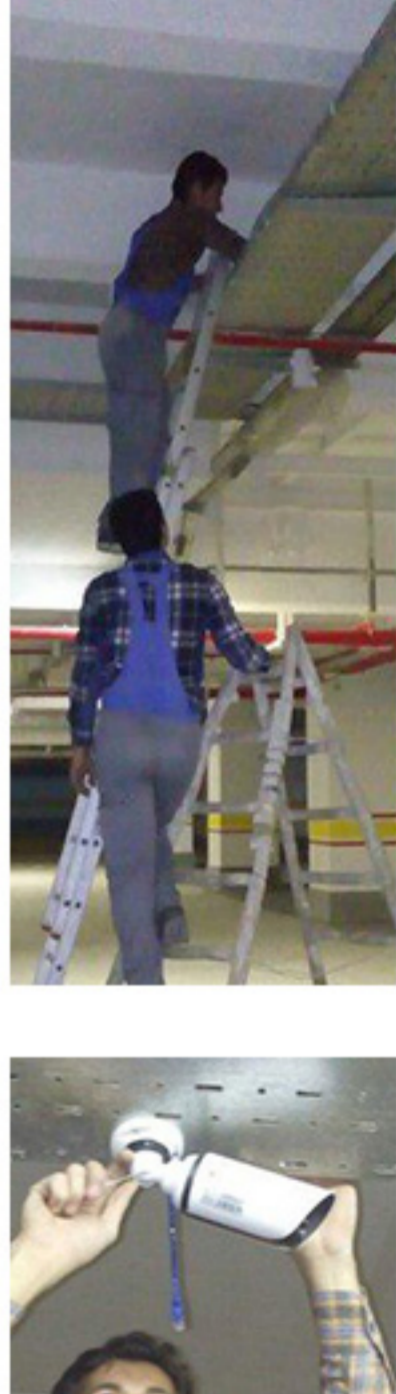
275 Vandal-proof Mini Dome Network Cameras to Seize Wide Angel of View

With 93.1° field of view, Milesight Vandal-proof Mini Dome Network Camera allows to catch broader view in the commercial and residential parts of the halls, which will maximally get the images in the monitoring area. The IP67-rated weatherproofing housing protects the camera against humidity, dust, and temperature fluctuations while IK09-rated vandal proof shield the camera from the potential violence sabotage. 0.002Lux ultra low-light capability enables the camera to produce color images even in low light condition.



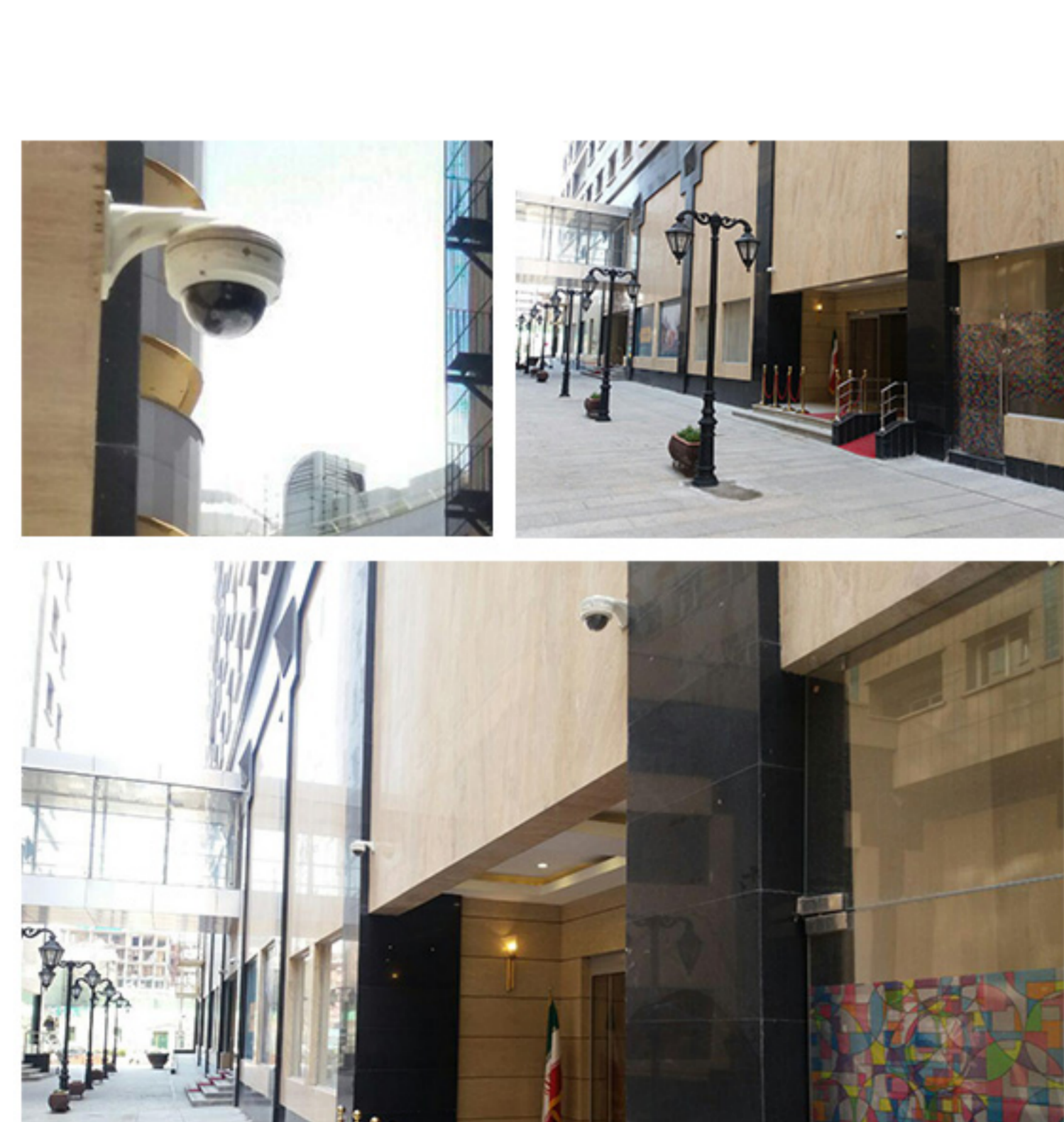
192 Mini Bullet Network Cameras Unleash Maximum Energy in Minimum Size

Light environment would be a crucial factor when selecting appropriate devices in the parking lot. A camera with strong IR capability would be qualified for this area, and that's the reason why Milesight Mini Bullet Network Camera was chosen. With IP67-rated weatherproofing housing, the camera would keep moisture from damaging the electronics. The small size also make the model distinguished, and the small but functional product is what the complex needed in the parking lot.

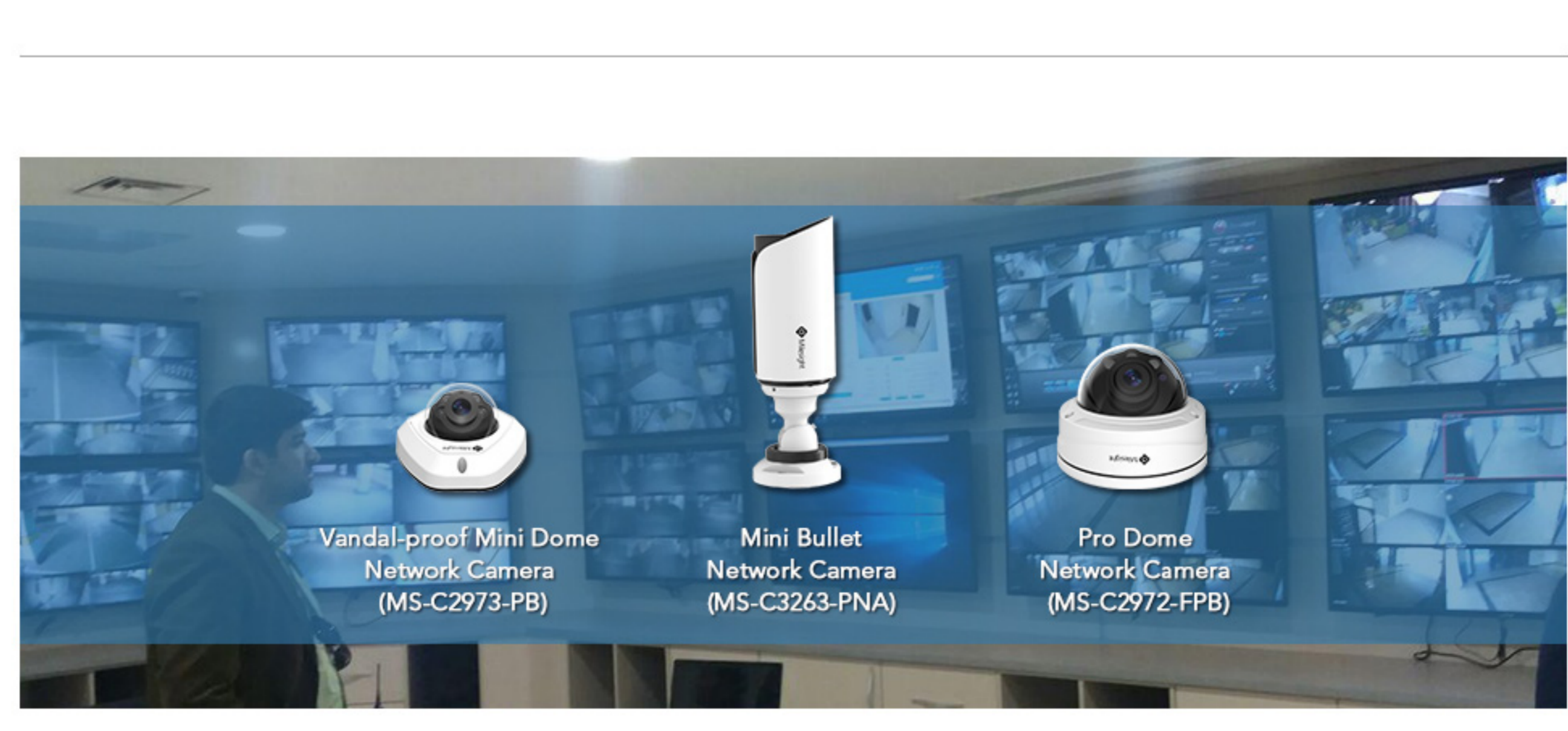


28 Pro Dome Cameras for Entrance and Outdoor Environment

With 0.002Lux ultra low-light capability, the starlight camera is able to deliver high detailed color image even in low light environment and near infrared light environment without any supplementary lighting. The 140dB WDR allows the camera to record greater scene details with true color reproduction even under the extreme back light and high contrast conditions especially in the entrance.



Milesight continuously enhances R&D capability to develop marketable products. Different models feature different highlights, which satisfy diversified needs for specific application scenarios.



Result

The project was proved a great success with Milesight network cameras' quality and performance. The commercial and residential areas are well guarded by the camera. Once the emergency occurs, the staff can response as soon as possible to handle it. With low light visibility, IR technology and super WDR up to 140dB, the lighting problem in the parking lot, entrance and outdoors is readily solved. The second phase of the project in another residential and commercial complex named Iman is supposed to install hundreds of Milesight cameras in 2018 on the basis of the success this time.

